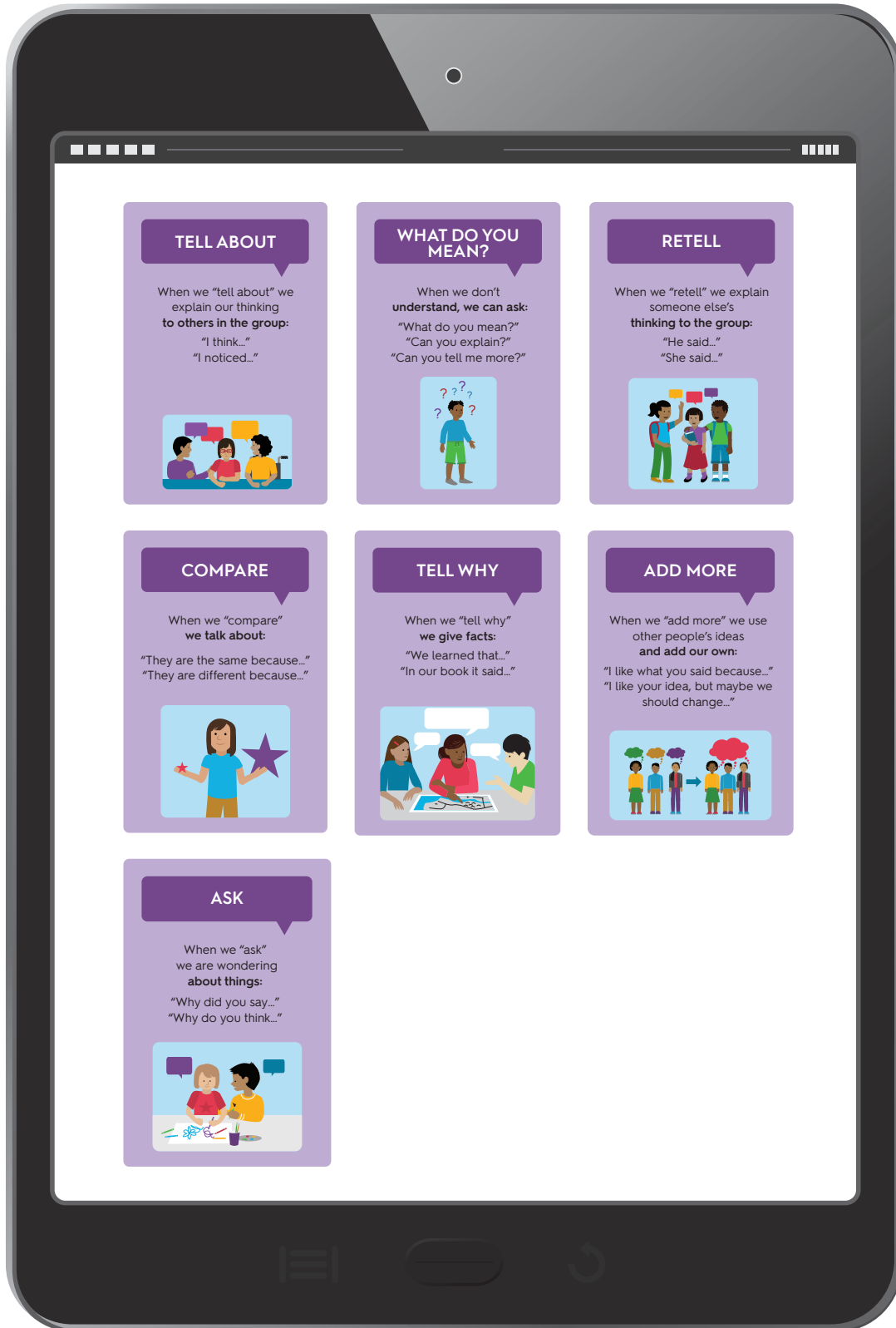


MY CLASSROOM TALK TABLET



WIDATM

Original concepts designed by Lynn M. Jeka and DeeDee Kersch at the Yerington Elementary School. Recreated with their permission by WIDA.

WIDA is housed within the Wisconsin Center for Education Research at the University of Wisconsin-Madison. © 2022 The Board of Regents of the University of Wisconsin System, on behalf of WIDA

TELL ABOUT

When we “tell about” we
explain our thinking
to others in the group:

“I think...”

“I noticed...”



WIDA[™]

*Original concepts designed by Lynn M. Jeka and DeeDee Kersch at the Yerington Elementary School.
Recreated with their permission by WIDA.*

WIDA is housed within the Wisconsin Center for Education Research at the University of Wisconsin-Madison.
© 2022 The Board of Regents of the University of Wisconsin System, on behalf of WIDA

WHAT DO YOU MEAN?

When we don't understand, we can ask:

"What do you mean?"

"Can you explain?"

"Can you tell me more?"



WIDA[™]

Original concepts designed by Lynn M. Jeka and DeeDee Kersch at the Yerington Elementary School. Recreated with their permission by WIDA.

WIDA is housed within the Wisconsin Center for Education Research at the University of Wisconsin-Madison. © 2022 The Board of Regents of the University of Wisconsin System, on behalf of WIDA

RETELL

When we “retell” we explain
someone else’s
thinking to the group:

“He said...”

“She said...”



WIDA[™]

*Original concepts designed by Lynn M. Jeka and DeeDee Kersch at the Yerington Elementary School.
Recreated with their permission by WIDA.*

WIDA is housed within the Wisconsin Center for Education Research at the University of Wisconsin-Madison.
© 2022 The Board of Regents of the University of Wisconsin System, on behalf of WIDA

COMPARE

When we “compare”
we talk about:

“They are the same because...”

“They are different because...”



WIDA[™]

*Original concepts designed by Lynn M. Jeka and DeeDee Kersch at the Yerington Elementary School.
Recreated with their permission by WIDA.*

WIDA is housed within the Wisconsin Center for Education Research at the University of Wisconsin-Madison.
© 2022 The Board of Regents of the University of Wisconsin System, on behalf of WIDA

TELL WHY

When we “tell why”
we give facts:

“We learned that...”
“In our book it said...”



WIDA[™]

*Original concepts designed by Lynn M. Jeka and DeeDee Kersch at the Yerington Elementary School.
Recreated with their permission by WIDA.*

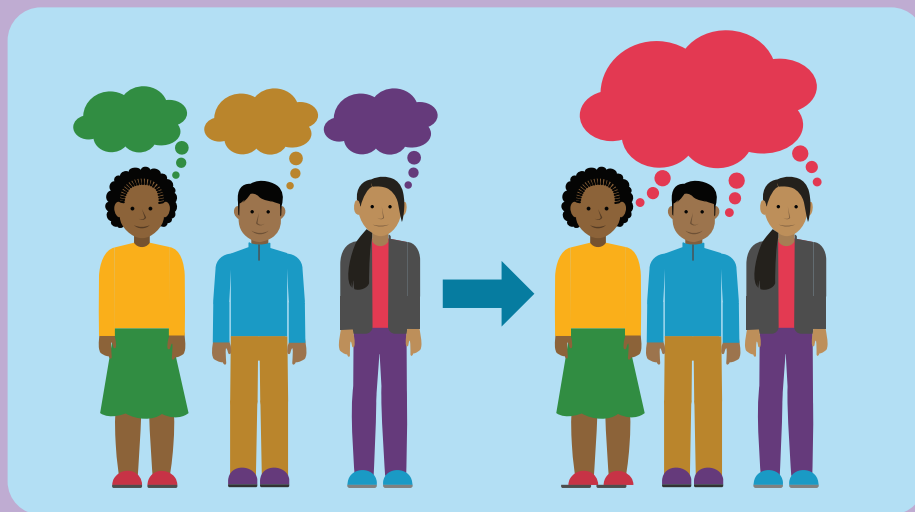
WIDA is housed within the Wisconsin Center for Education Research at the University of Wisconsin-Madison.
© 2022 The Board of Regents of the University of Wisconsin System, on behalf of WIDA

ADD MORE

When we “add more” we use
other people’s ideas
and add our own:

“I like what you said because...”

“I like your idea, but maybe we
should change...”



WIDA[™]

*Original concepts designed by Lynn M. Jeka and DeeDee Kersch at the Yerington Elementary School.
Recreated with their permission by WIDA.*

WIDA is housed within the Wisconsin Center for Education Research at the University of Wisconsin-Madison.
© 2022 The Board of Regents of the University of Wisconsin System, on behalf of WIDA

ASK

When we “ask”
we are wondering
about things:

“Why did you say...”

“Why do you think...”



WIDA[™]

*Original concepts designed by Lynn M. Jeka and DeeDee Kersch at the Yerington Elementary School.
Recreated with their permission by WIDA.*

WIDA is housed within the Wisconsin Center for Education Research at the University of Wisconsin-Madison.
© 2022 The Board of Regents of the University of Wisconsin System, on behalf of WIDA